

**METRIC**  
IF IN DOUBT ASK

**INSTALLATION KIT.**

PRODUCTION CONTROL TO ENSURE A COPY OF THIS DRAWING IS INCLUDED WITH EACH INSTALLATION KIT.

BECAUSE OF THE MULTIPLICITY OF POTENTIAL APPLICATIONS THE INSTALLATION DETAILS SHOWN ARE SUGGESTIONS ONLY. THE USER SHOULD ENSURE THAT THE DESIGN, METHOD OF ASSEMBLY AND MATERIALS USED ARE SATISFACTORY FOR THE INSTALLATION.

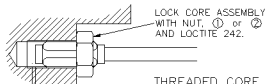
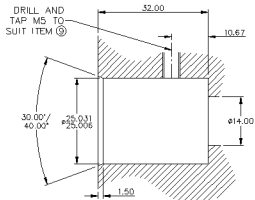
ISS	DATE	DRAWN	ECR No.	CHK	APP
1	30/1/04	DJT	10306/10	M.Bentley	M.Bentley

ITEM No.	DESCRIPTION	P+G PART No.	QTY.
1	FULL NUT M8 x 1.25.	X63-072-380	1
2	FULL NUT 5/16"-24 UNF.	X63-111-002	1
3	WAVEY WASHER	X63-112-012	3
4	SHIM WASHER	P202677	1
5	CIRCLIP	X69-005-107	1
6	"O" RING (17 x 2)	X64-194-007	1
7	"O" RING (21 x 2.5)	X64-194-009	1
8	ANTI EXTRUSION RING	X64-074-003	1
9	M5 CONICAL SET SCREW	X63-096-506	1
10	COPY OF AI202800	AI202800	1
11	LABEL (SUPPLIED LOOSE)	P200919	1
12	INSTALLATION KIT LABEL	P203193	1

ITEM 11 LABEL IS SUPPLIED FOR THE CUSTOMER TO RECORD ICT ORDERING CODE AND TO BE FITTED IN VISIBLE LOCATION ADJACENT TO SENSOR FOR RE-ORDERING REFERENCE.

**INTERNAL FLANGE MACHINING DETAILS.**

TO SEAL USE ITEMS (7) & (8)



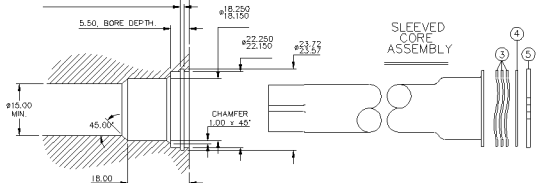
**THREADED CORE ASSEMBLY**  
M8 x 1 OR 5/16"-24 UNF.

1.00  
MINIMUM FREE SPACE  
FOR RETURN OIL FLOW.

2.65, TO BOTTOM OF CIRCLIP GROOVE.

1.750  
1.150  
CIRCLIP GROOVE WIDTH.

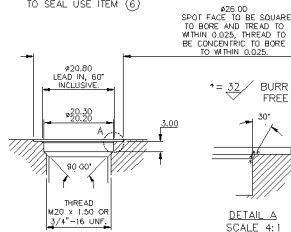
5.50, BORE DEPTH.



**SLEEVED CORE ASSEMBLY**

**THREADED FLANGE MACHINING DETAILS.**

TO SEAL USE ITEM (6)



±0.25.00  
SPOT FACE TO BE SQUARE TO BORE AND TREAD TO WITHIN 0.025. THREAD TO BE CONCENTRIC TO BORE TO WITHIN 0.025.

±.52 BURR FREE

DETAIL A  
SCALE 4:1

SCALE 1:1 UNLESS STATED	IF CONTROL DIMENSIONS (IN) ARE SPECIFIED THEY ARE TO BE SUBJECT TO 100% INSPECTION OR STATISTICAL PROCESS CONTROL.	D No ICT100	MATERIAL -	FINISH -
THIRD ANGLE PROJECTION TO BS 8888	FIRST USED ON REF.			

<p>DIMENSIONS IN LINE WITH PENNY &amp; GILES STANDARDS 33-551 SURFACE TEXTURE VALUES IN MICROMETRES (µm) TO BS1361 P12 ALL MACHINED SURFACES TO BE 1.6/ ALL SCREW THREADS TO BS2463 P12 EXTERNAL CLASS: 4g INTERNAL CLASS: 4H</p> <p>ANGULAR LINEAR (MACHINING) BREAK EDGE 1:1 0.4 mm +/- 0.2 mm 0.08 - 0.10 mm 0.2 mm +/- 0.2 mm 0.08 - 0.10 mm 0.10 mm +/- 0.10 mm 0.1 - 0.2 mm 0.05 mm +/- 0.05 mm 0.1 - 0.2 mm</p> <p>UNLESS OTHERWISE STATED</p>	TITLE <b>SUGGESTED ICT100 INSTALLATION DETAILS.</b>
---	--

<b>PENNY + GILES</b>	<b>A3</b>
PART NUMBER: <b>AI202800</b>	SHT 1 OF 1 SHTS